

# Dates for your diary:

(charges may apply - more information on  
[www.greensandtrust.org](http://www.greensandtrust.org))

Saturday, 22nd October  
*Stockgrove Country Park*  
08.30 - 10.30  
*Autumn Birds Walk*

---

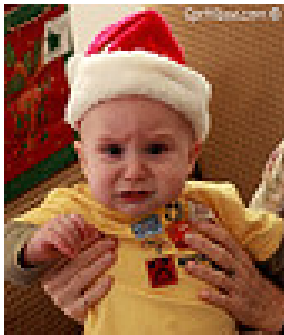
Sunday, 23rd October  
*Rushmere Country Park*  
11.00 - 15.00  
*Feed the Birds*

---

Saturday, 26th November  
*Rushmere Country Park*  
10.00 - 12.00  
*Winter Woodland Walk*

---

Saturday, 3rd December  
*Rushmere Christmas Fair*  
11.00 - 15.00



# The Greensand Trust Midweek Volunteer Team Conservation Tasks & Events Programme

Autumn 2011



*Opportunities for local people  
to enjoy & help conserve the  
countryside on their doorstep*

PLEASE WEAR STEEL TOE-CAPPED BOOTS ON TASKS (OTHER APPROPRIATE SAFETY CLOTHING WILL BE PROVIDED)

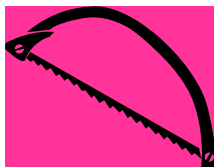
## October

WEDNESDAY 5TH OCTOBER - ASPLEY WOODS WET FLUSH

Back to the Wet Flush to manage the area we've been clearing over recent years. Meet at the layby on the Woburn Road just south of Woburn Sands (SP 935343).

WEDNESDAY 12TH OCTOBER - LINSLADE WOOD

Carrying out some hazel coppicing. Meet at the layby on the Stoke Road outside of the Wood.



WEDNESDAY 19TH OCTOBER - RAMMAMERE HEATH

Our annual heather seed collection task. Meet at Stockgrove and bring your favoured secateurs if you'd prefer.

WEDNESDAY 26TH OCTOBER - HEATH WOOD

Clearing robinia, rhoddie & holly. Meet at the meadow gate near the Old Linslade Road bridge (parking in Heath Meadow).

## November

WEDNESDAY 2ND NOVEMBER—SHIRE OAK HEATH

Heathland restoration cutting back bramble & birch. Meet at Rushmere Visitor Centre (NOT British Legion).



WEDNESDAY 9TH NOVEMBER - KINGS WOOD

Coppicing along the rides. Meet at Stockgrove.



WEDNESDAY 16TH NOVEMBER - LORDS HILL, RUSHMERE

More heathland restoration (birch clearance). Meet at the Visitor Centre, parking in the main car park.

WEDNESDAY 23RD NOVEMBER - RUSHMERE

Cutting trees in preparation for Christmas. Robo Bob has volunteered to be the Christmas fairy this year. Meet at the Visitor Centre.



WEDNESDAY 30TH NOVEMBER - RECTORY FARM

It's the annual cutting and burning willow task on the moor at Rectory Farm. Meet at the Farm (at the end of the road by the Church) in Great Brickhill and enjoy some lovely views (SP898305).

## December



WEDNESDAY 7TH DECEMBER - RUSHMERE

More cutting and clearance of Christmas trees. Meet at the Visitor Centre.

WEDNESDAY 14TH DECEMBER—RUSHMERE

Planting Christmas trees to replace the ones we've cut down. Meet at the Visitor Centre again.



WEDNESDAY 21ST DECEMBER - CHRISTMAS BONFIRE

Venue to be notified. Spuds will be provided for baking on the fire. Bring some extras if you wish.

**(N.B. No task on 28th Dec)**

Tasks begin at 10am and finish around 3.30.

Wear old clothes and strong (preferably steel toecap) footwear.

You will need a packed lunch and drinks if you are planning to stay all day.

For further advice and information contact

the Rangers at Stockgrove Country Park,

Brickhill Road, Heath & Reach, Leighton Buzzard, LU7 0BA.

Tel: 01525 237760.

E-mail [rangers@greensandtrust.org](mailto:rangers@greensandtrust.org)



The Midweek Team is run with financial assistance from Leighton-Linslade Town Council.

